

Circular, Sustainable, and Integrated Water & Food Management For Household with “Deeply High House”

M. Toprak CILIZLAR

The Future of Sustainability of Water, Agriculture, and Food

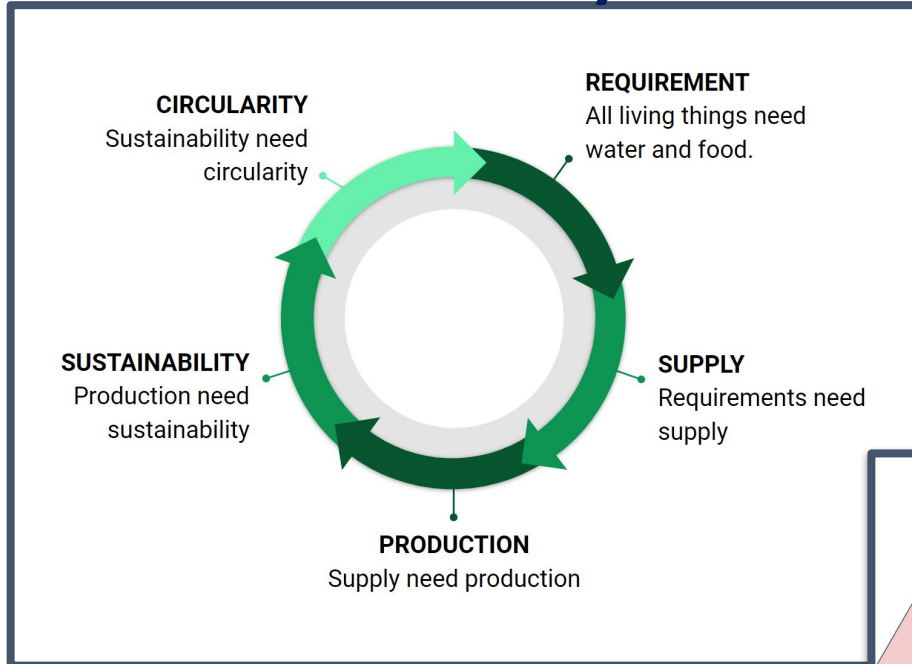
#waterforpeace

24.03.2024

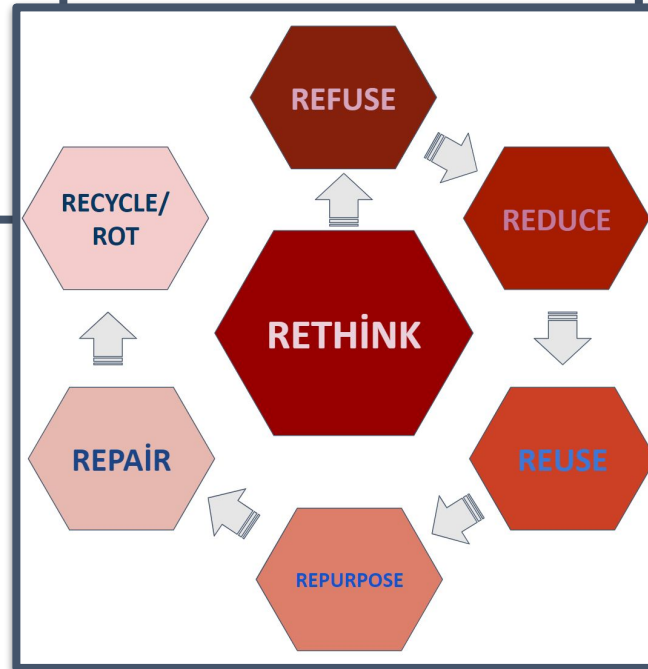


Our General Design Parameters

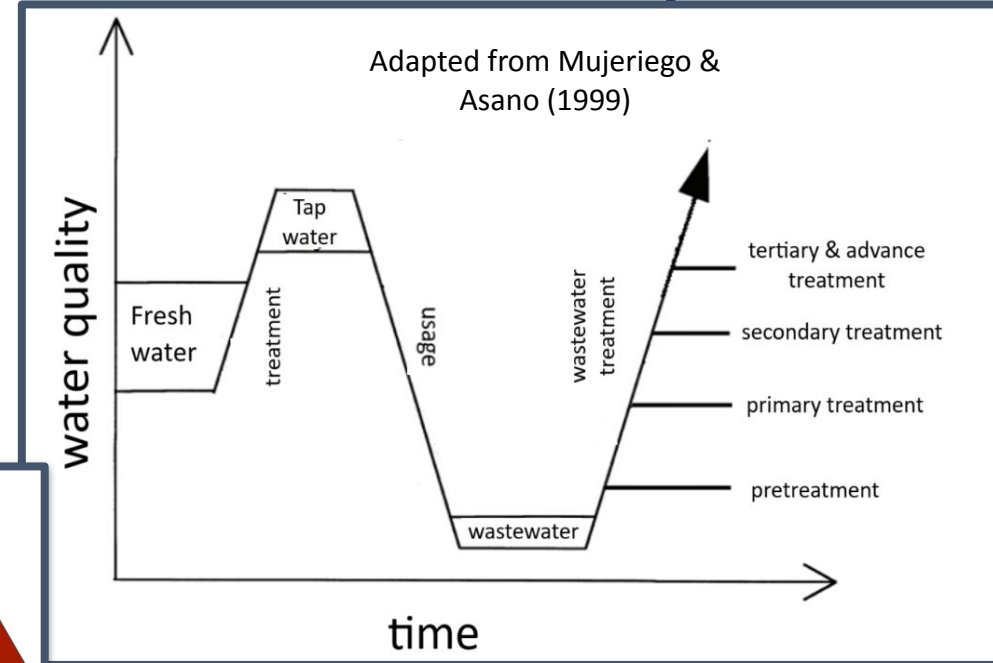
Circularity



7 R's of Sustainability



Fit for Purpose



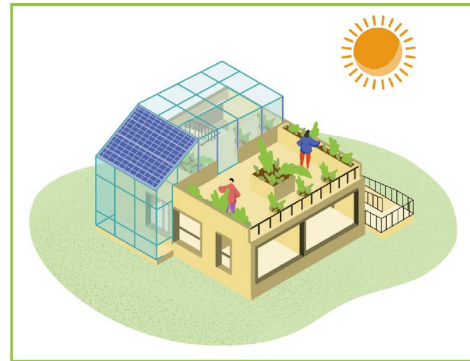
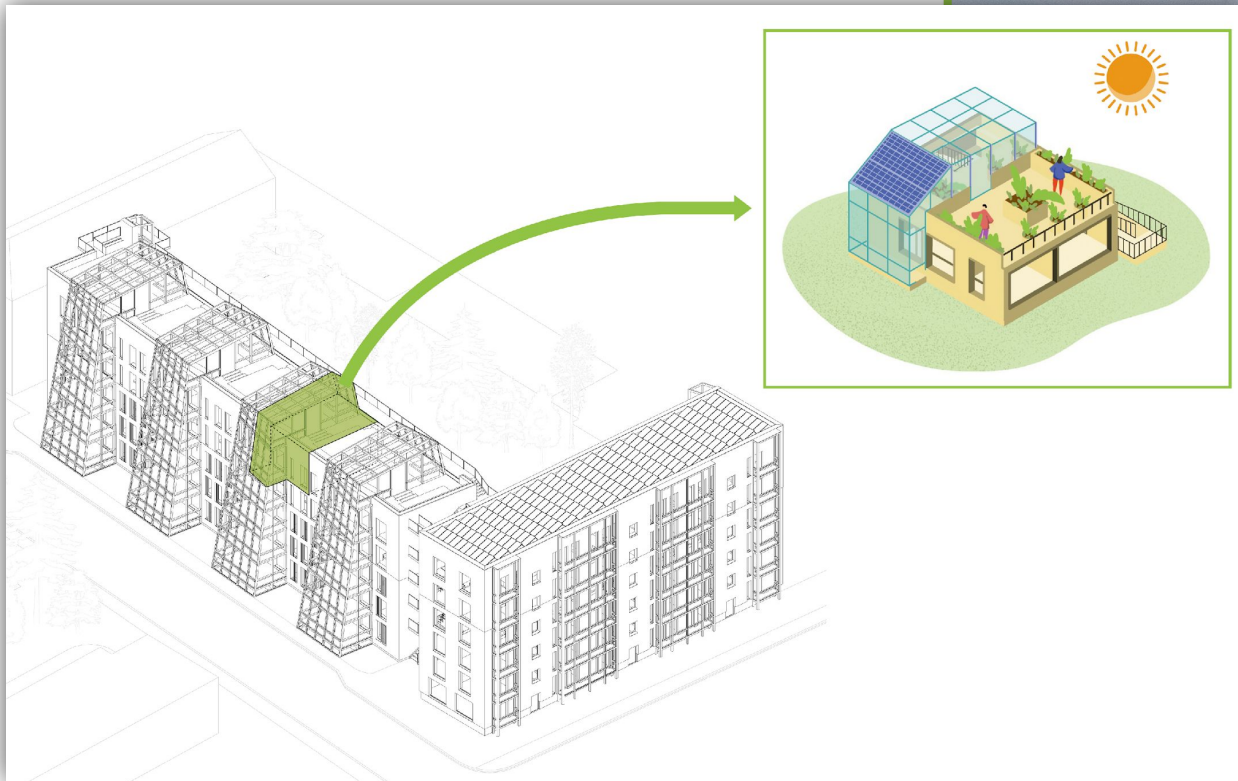
How can we transform all existing infrastructure of “wastewater resources” toward re-usage for cleaning and agriculture in all sizes of residential houses, apartment buildings, public buildings, and industrial and military complexes both in developing and developed countries?



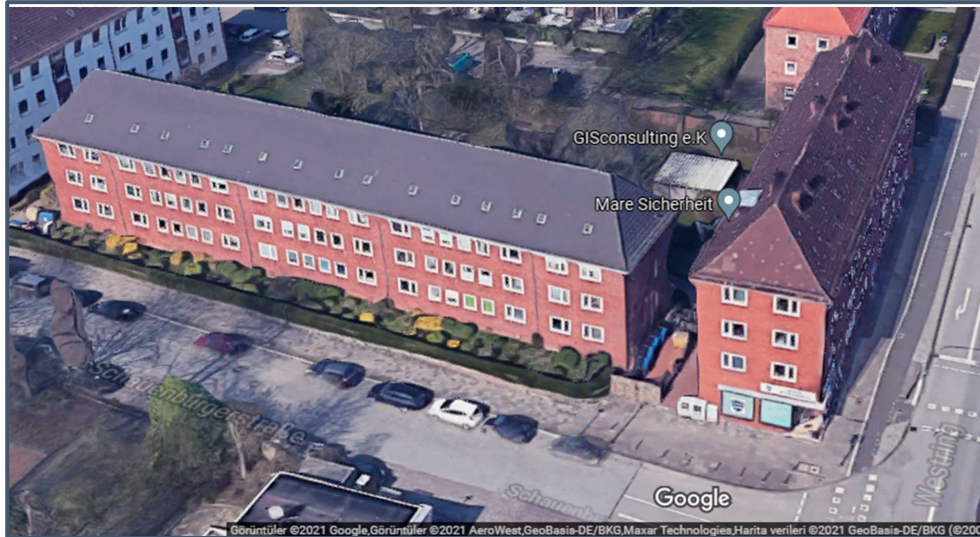
Deeply High (SDE 21/22)

Represent As a Single Apartment

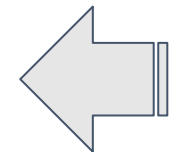
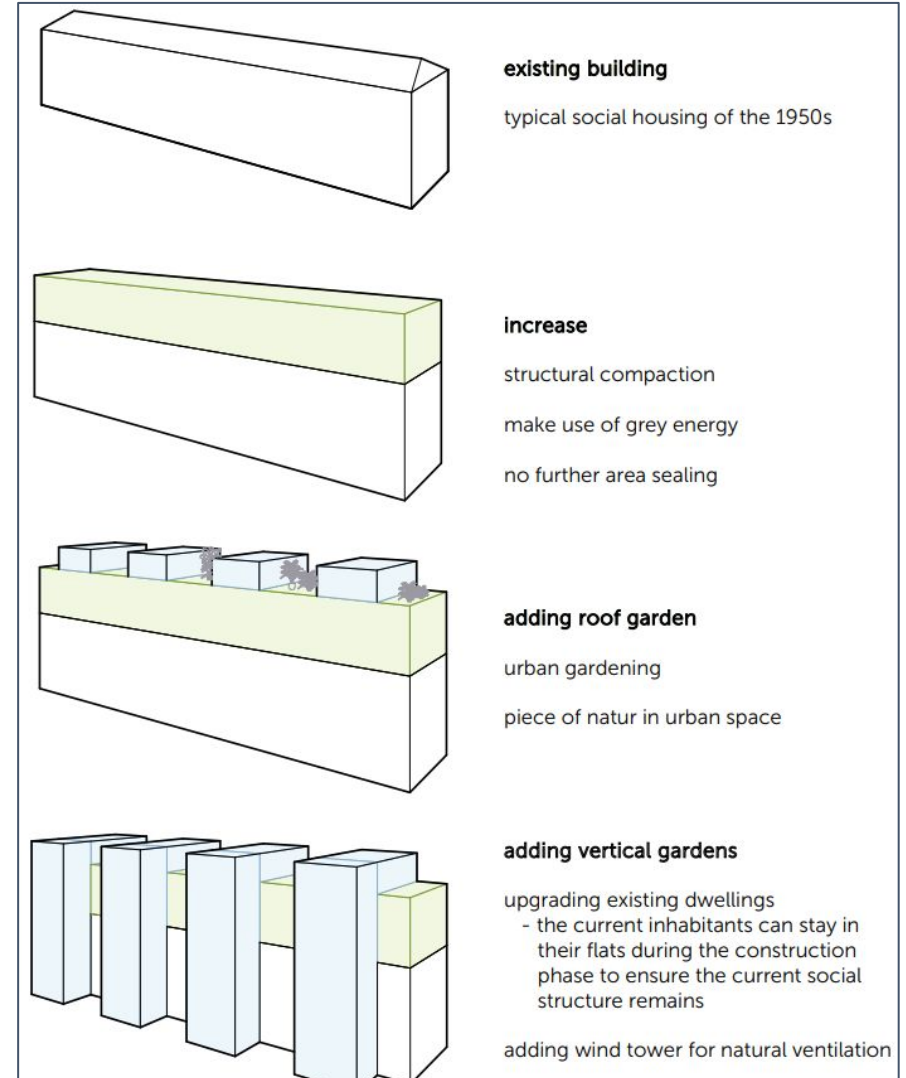
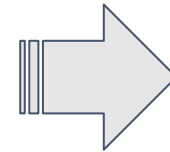
Design for Apartment Bloks



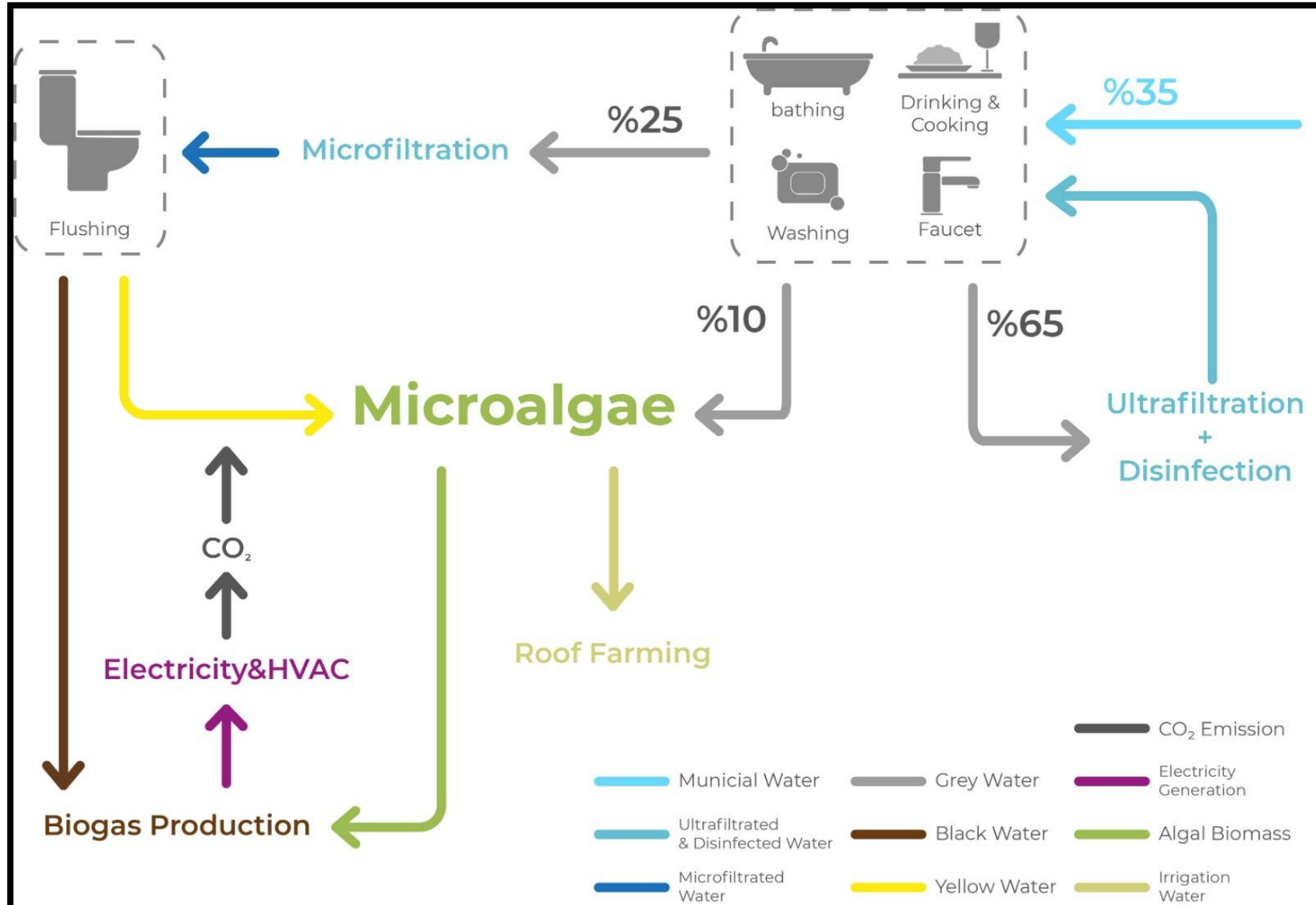
Deeply High (SDE 21/22)



Design Steps

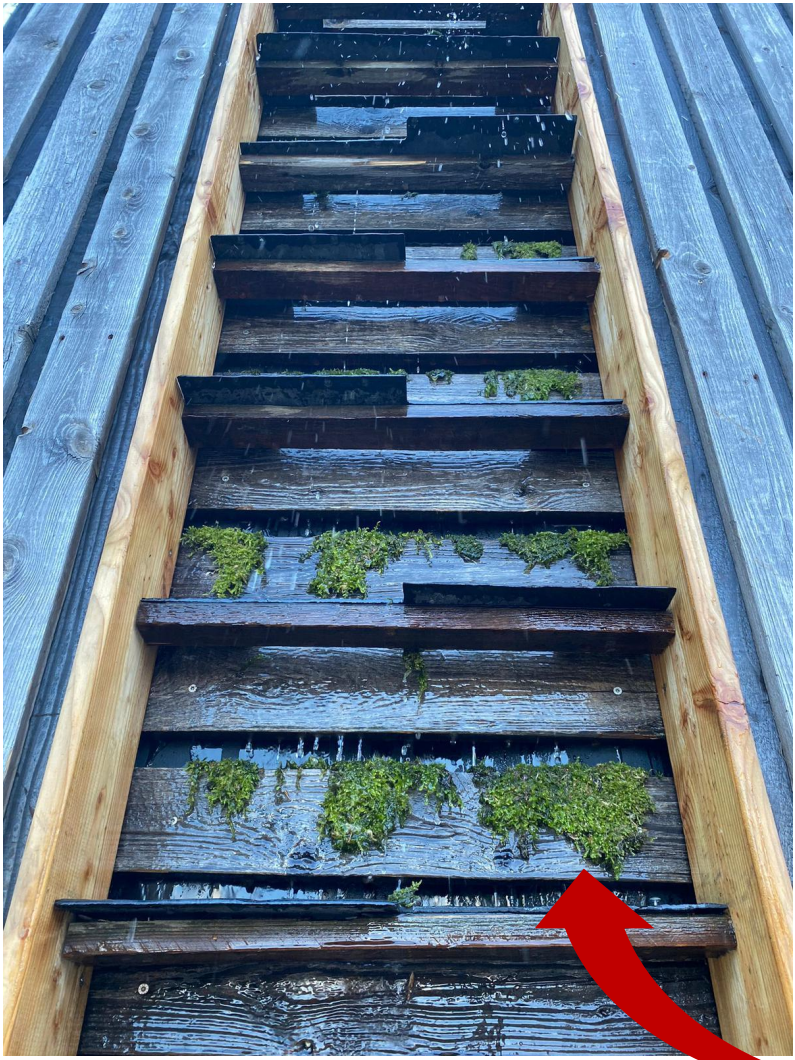


Our Household Water System



Deeply High (SDE 21/22)

AlgaeFALL

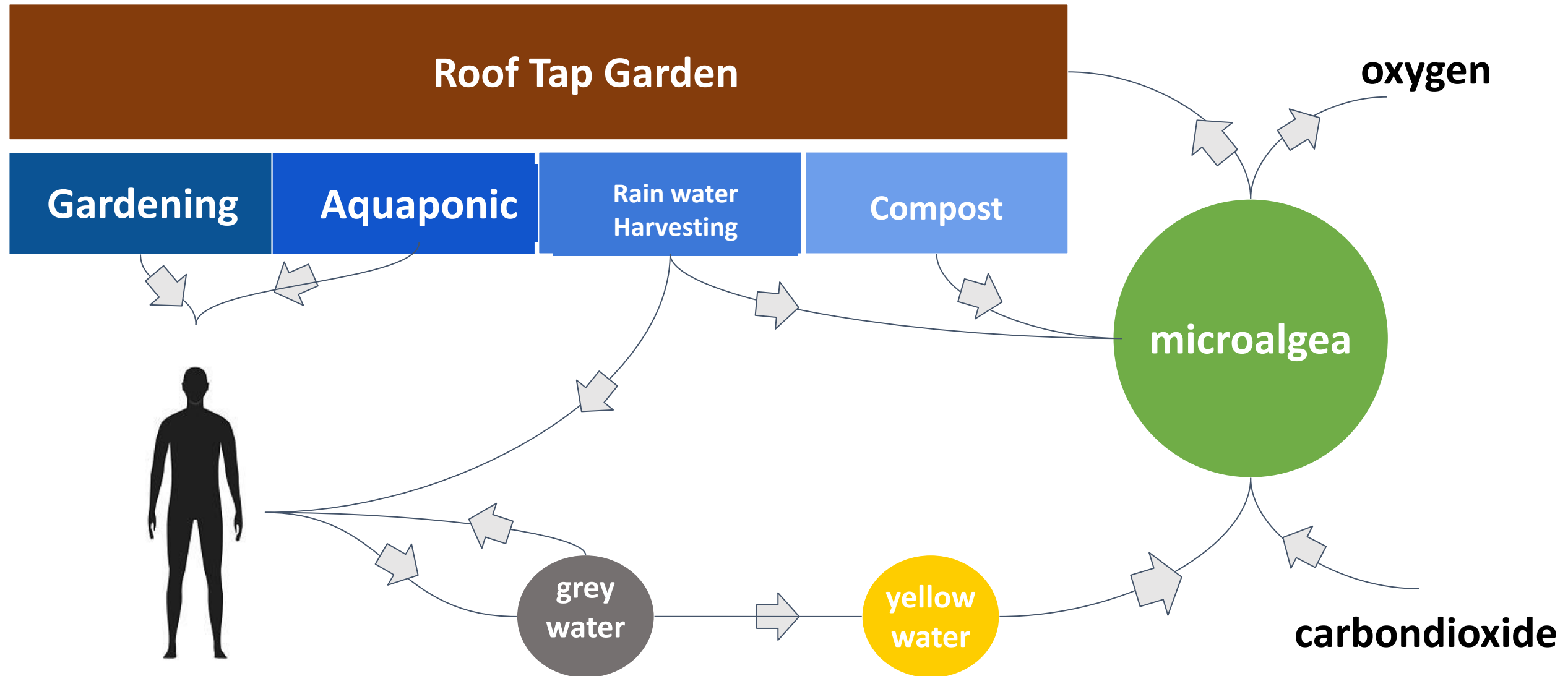


Deeply High (SDE 21/22)



Rooftop Garden **&** **Photovoltaics**

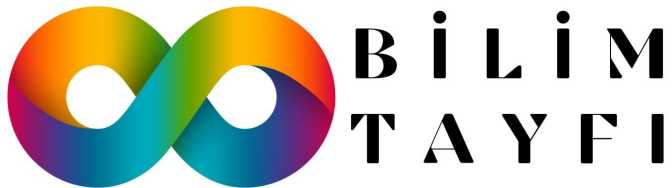
Circular, Sustainable, and Integrated Water & Food Management



**Thanks
for
Listening**



**Any
Question?**



Instagram: @bilimtayfi
Youtube: @bilimtayfi

